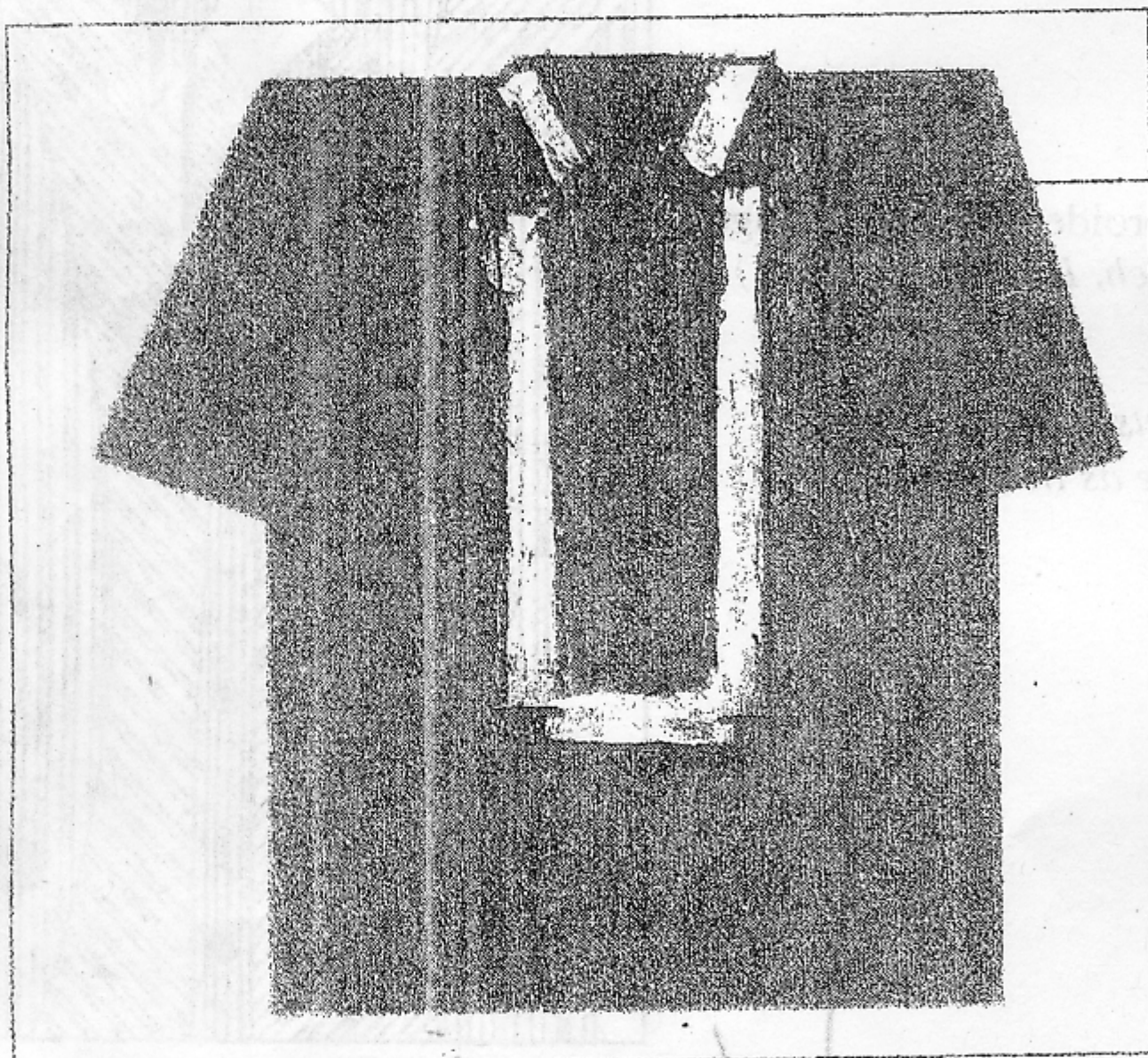


DepED NATIONAL UNIFORMS SYs 2009-2011

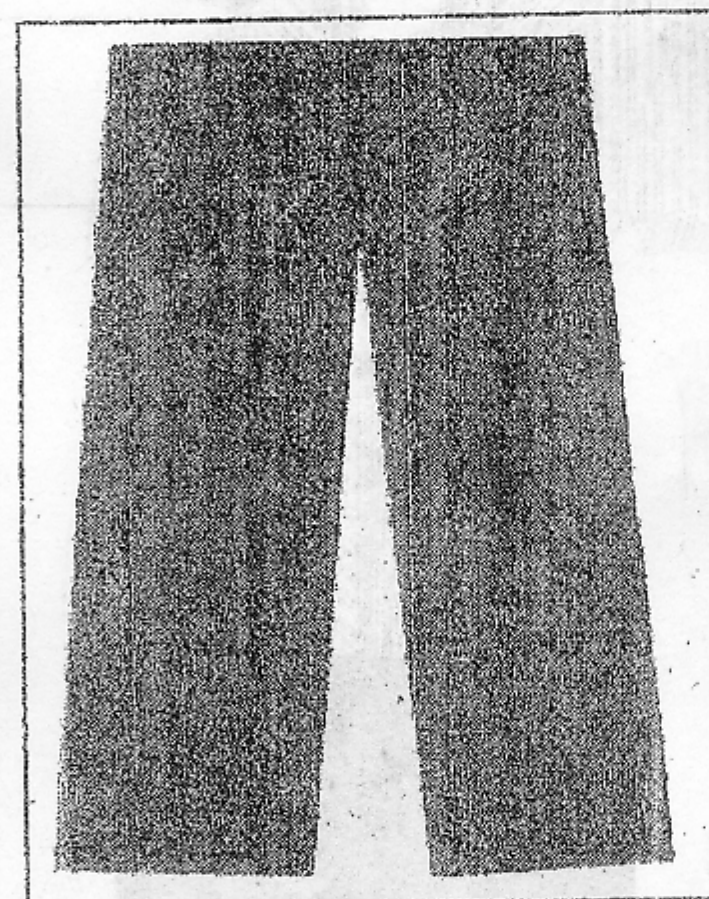
MALE – MONDAY

DESCRIPTION:

A classic midnight blue half open short sleeves with two side slit on both sides that is next to a modern suit. The linen fabric with distinct details, embroidered blue gray imported thread with four different kinds of stitches along the wonderfully embellished imported midnight blue buttons with silver ring makes a perfect understated but elegant look. The official DepED logo marked on the left collar is the highlight of the barong.



Embroidered DepED Logo
(Torch: length 1.5cm.)



Materials Used:

Teaching

Suki Yaki
100% polyester
3cm measuring distance
Measuring Distance
Ends/cm Pick/cm
31 31

Non-Teaching

Gusot Mayaman
100% ramie
#of Threads
Measuring Distance 3cmwarp
Ends/cm Pick/cm 5cm filling
27 23

Materials Used:

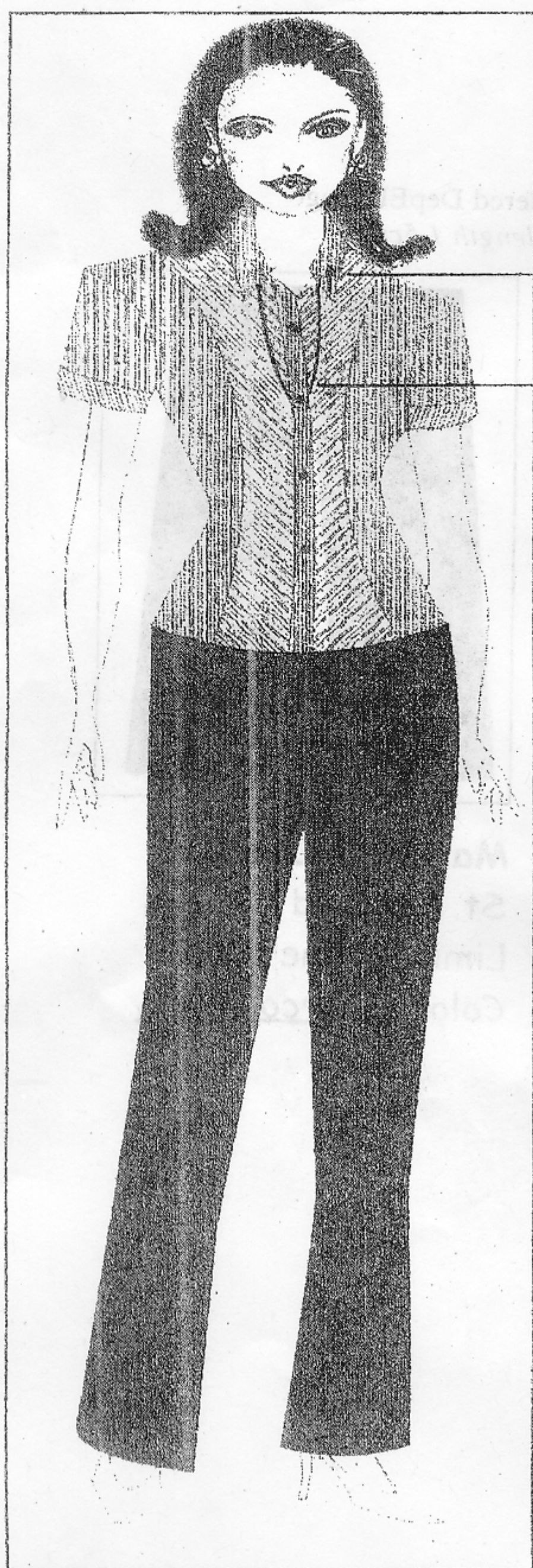
St. Bernard
Limited Fine Wool
Color: Charcoal Grey

Enclosure No. 2 to DepED Order No. 27, s. 2009

FEMALE - MONDAY

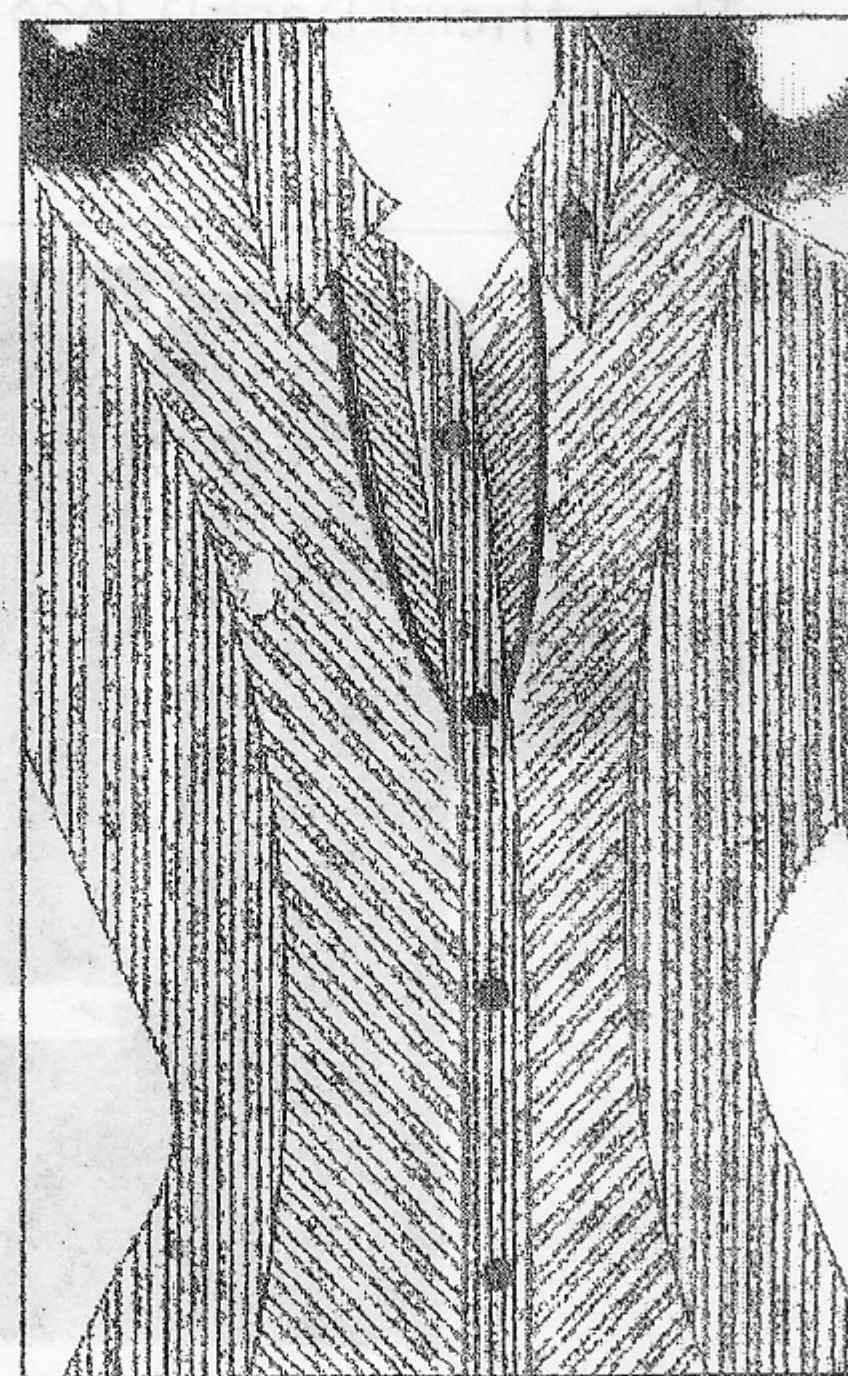
DESCRIPTION:

An ivory white tropical cool blouse with twin cerulean DepED corded stripes (Millicent 1020) accented with pleats on the body and direct embroidery of the torch on the left collar highlighted with buttons in official DepED hologram logo paired with slate gray Matt Lauren pants accented with casper torch.



Embroidered DepED Logo
(Torch, Length - 1.5 cm.)

Pleats - fabric is the
same as the pants



Enlarged detail



Blazer - Optional

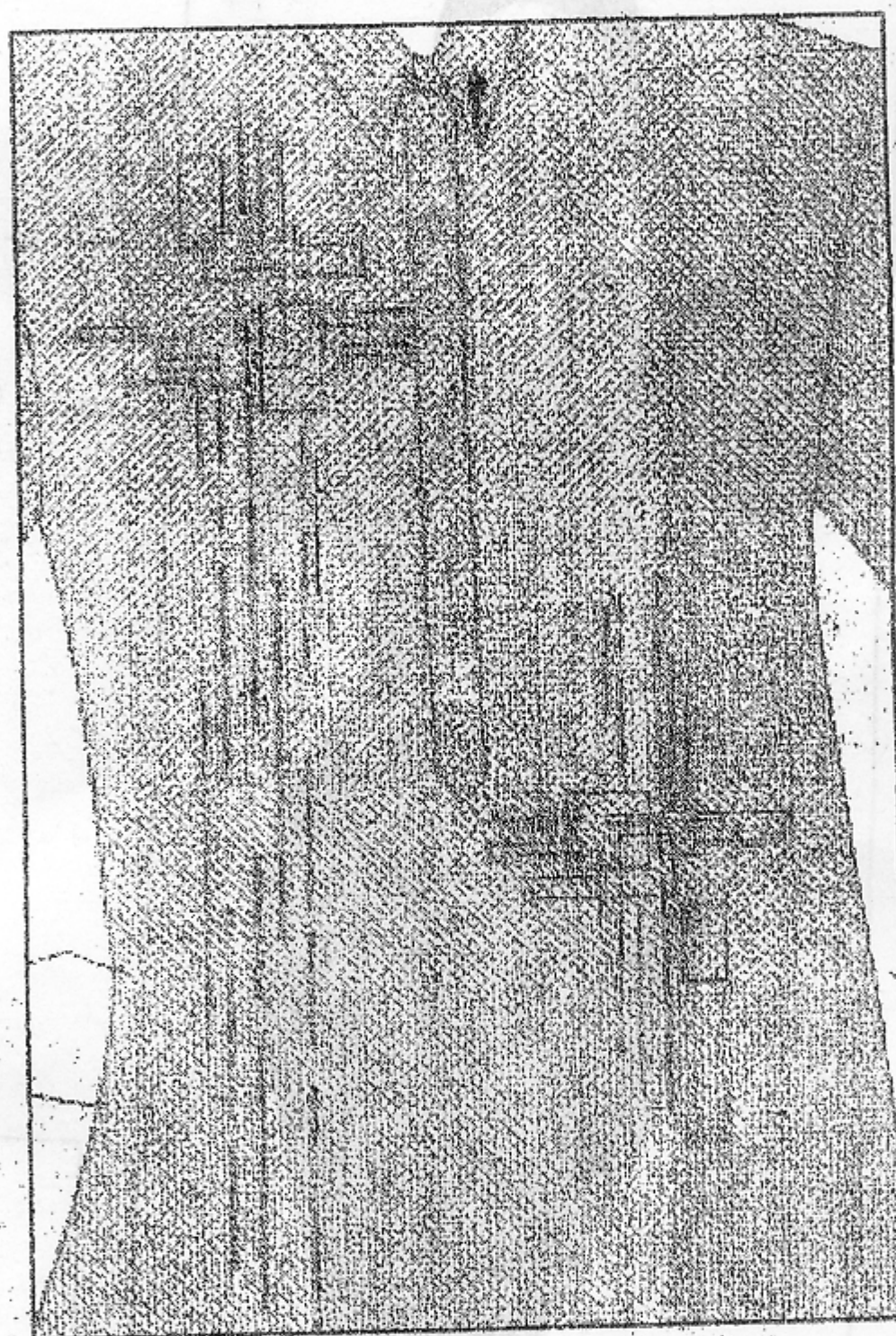
MALE - TUESDAY

DESCRIPTION:

A half-open apple green barong, Levin's 702, with official DepED reverse stamping accented with special multicolored embroideries and direct torch on the left collar, highlighted with buttons in official DepED hologram logo paired with golden brown pants with stripes in DepED colors, red and blue.



Embroidered DepED Logo
(Torch; length 1.5cm.)



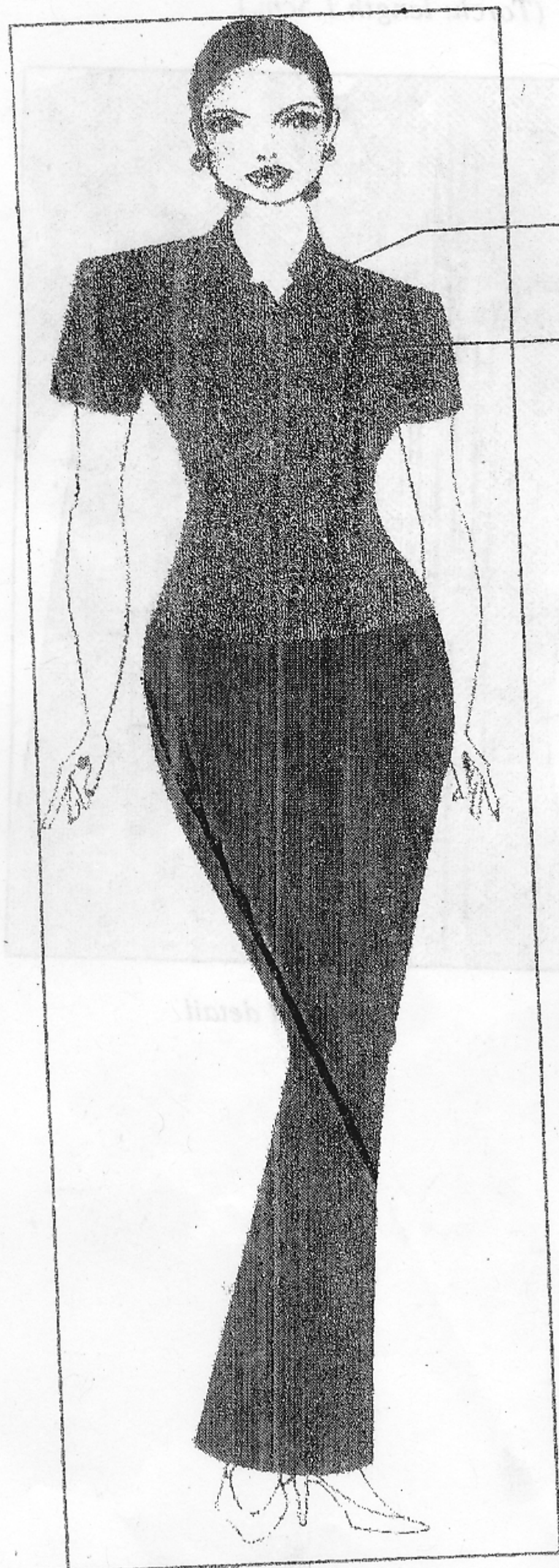
Enlarged detail.

Enclosure No. 4 to DepED Order No. 27, s. 2009

FEMALE - TUESDAY

DESCRIPTION:

A persimmon tropical linen blouse (Winslette 1004) with official DepED reverse stamping, accented with multicolor embroidered pleats, stitches on the body and direct torch on the left collar highlighted with buttons in official DepED hologram logo, paired with Russet black pants with off-white twin stripes.

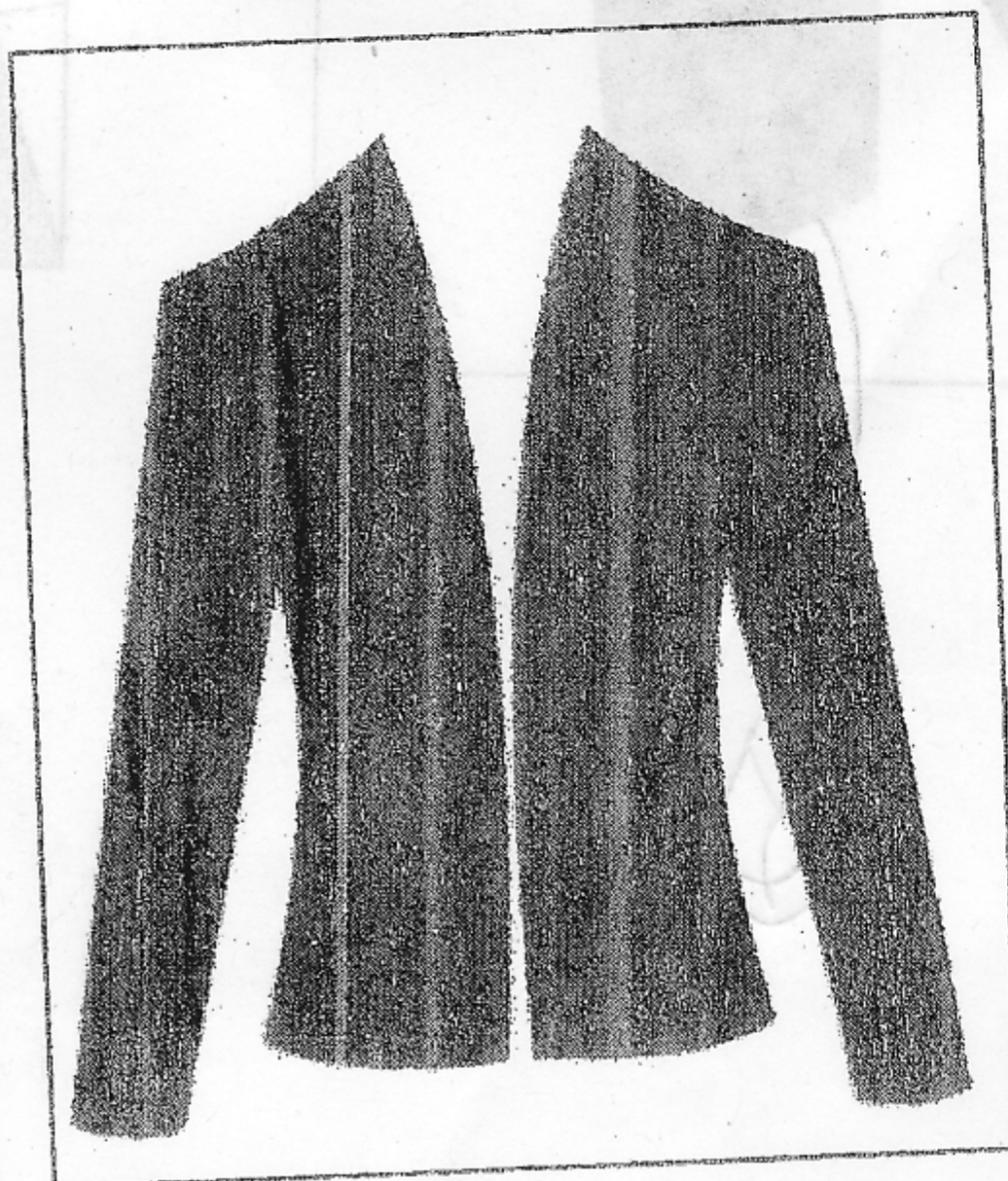


Embroidered DepED Logo
(Torch; length 1.5cm.)

Embroidery made up of
running stitches (thread color
- persimmon) and
embroidered pleats of multi-
colored thread



Enlarged detail



Blazer - optional

